

INTRODUCING

# Tetric® Prime

**NEW**  
**Prime**  
Handling



**High performance,  
universal composite**  
system featuring Prime handling

**Efficient  
Esthetics**

**ivoclar**  
**vivadent**  
passion vision innovation


# High quality handling properties

**Tetric® Prime** is a high quality, universal composite focused on Prime handling. Tetric Prime was developed with the clinician in mind, responding to requests for a universal composite that offers:

- Smooth, creamy handling for flawless adaptation and contouring in the anterior and posterior
- Twelve streamlined shades to create esthetically optimized restorations
- High radiopacity to visualize marginal integrity and ensure proper diagnosis in future recalls
- A single shade solution for Class I & Class II restorations

## Prime Handling

Over the past decade, clinicians have stated that handling is the primary reason they select a direct restorative material, in addition to quality, predictability and esthetics. Tetric Prime, Ivoclar Vivadent's newest composite, offers high quality, predictability and esthetics with the handling properties the market desires.

Conventional composites		4-mm-composites <sup>3s</sup>	
FLOWABLE	SCULPTABLE	FLOWABLE	SCULPTABLE
Tetric EvoFlow®	Tetric Prime	Tetric® PowerFlow	Tetric® PowerFill
			

**Tetric Prime is the perfect companion to Tetric® PowerFlow and Tetric® PowerFill**, true restorative innovation. These materials are the industry's first high performance posterior composites that can be placed in increments up to 4mm and be cured from the occlusal surface completely in just 3 seconds using the Bluephase® PowerCure™ LED curing light.

- Glossy surface
- Creamy consistency
- Excellent adaptability
- Easy contouring
- Effortless brushability
- Easy application



**NEW**  
**Prime**  
Handling

# Chameleon effect creates a natural shade blend

Creating natural looking esthetic restorations requires direct restorative materials that are designed to mimic the light optical properties of natural enamel and dentin as much as possible. The industry calls this the chameleon effect.

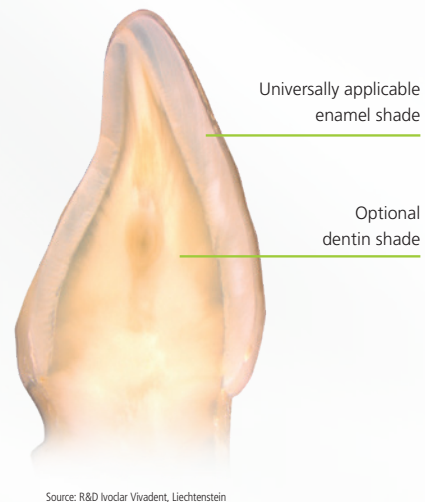
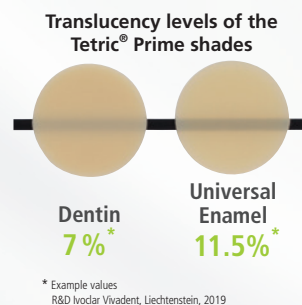
The refractive index of the monomer matrix and the fillers match in Tetric Prime allowing light to transmit through the composite material for a more natural shade blend. This allows for a more streamlined shade offering.



The refractive index of the monomer matrix matches that of the fillers - in this case, of the glass rod. It appears nearly invisible.

**The translucency levels of Tetric Prime closely match that of natural enamel and dentin.** Our universal enamel shades allow for a single shade application in most cases. In cases with large defects or heavily stained dentin surfaces, low translucency (dentin) shades are available.

**Tetric Prime offers 12 shades that will esthetically meet the needs of your direct restorative cases**, while offering quality and predictability. If a case requires clinical excellence in esthetics, we offer a complete range of shades and translucencies in IPS Empress® Direct.



## Anterior restoration

made of Tetric EvoFlow® A2 Dentin and Tetric® Prime Universal Enamel A2

Source: Dr Carola Pentelescu, Ivoclar Vivadent, Liechtenstein



Before: Insufficient mesio-palatal composite filling on tooth 7



After

## Posterior restoration

made of Tetric EvoFlow® A2 Dentin and Tetric® Prime Universal Enamel A2

Source: Dr Carola Pentelescu, Ivoclar Vivadent, Liechtenstein



Before: Insufficient disto-occlusal composite filling on tooth 21



After

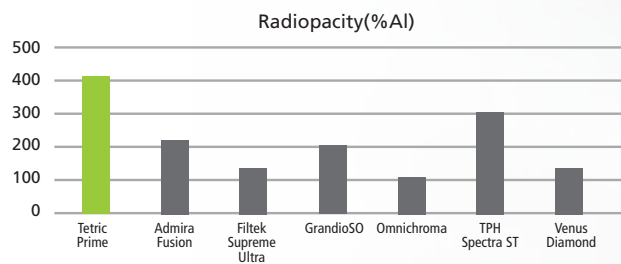


# Time-tested quality and durability

Tetric Prime combines proven product features with state-of-the-art technology. Tetric Prime is based on the foundational properties of Tetric EvoCeram, which maintains a 95.1% survival rate<sup>1</sup>.

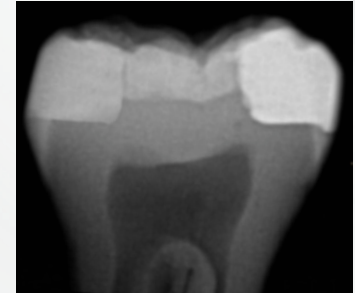
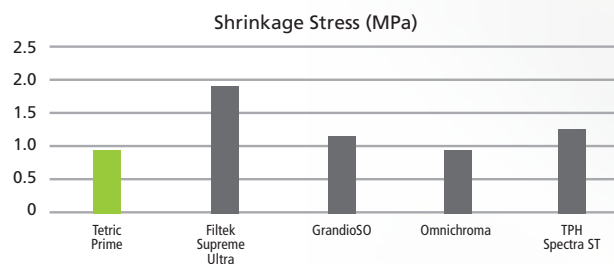
## Tetric Prime offers:

### High radiopacity<sup>2</sup> of up to 396% AI



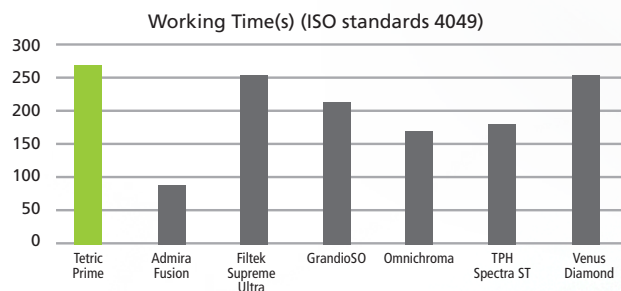
Tokuyama OMNICHROMA vs. Tetric Prime

### Low Shrinkage Stress<sup>2</sup> of 0.97 MPa



3M Filtek® Supreme Ultra vs. Tetric Prime

### Long Working Time<sup>2</sup> of more than 4-1/2 minutes



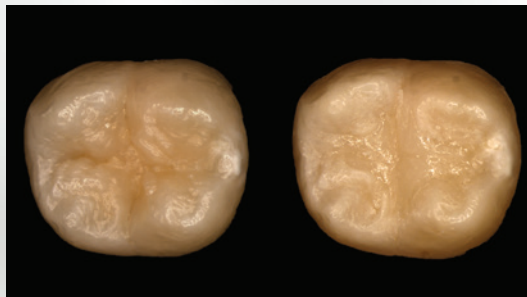
<sup>1</sup>A total of 890 fillings were monitored worldwide in seven clinical studies over observation periods ranging from 5 to 10 years.  
<sup>2</sup>The overall survival rate calculated for Tetric EvoCeram® was 95.1 percent.

<sup>2</sup>Data from Ivoclar Vivadent, AG in-house study.

# More efficient shade matching

Today's clinician is looking for more efficient shade matching, leading to single shade, universal composite systems. One single shade that can be used in every cavity class. While the technology is promising, patients today deserve higher-level esthetics in anterior teeth.

For dentists looking for the efficiency of a single shade solution in Class I & Class II restorations, Tetric Prime offers a highly translucent universal enamel shade (15%).



Tooth on left is unprepared, Tooth on right is restored with Tetric® Prime T shade



## Efficient Esthetics

**Tetric Prime is the newest composite from Ivoclar Vivadent.** It is Step 3 in what we call Efficient Esthetics, a solution of products designed to provide the dentist with the highest esthetics, quality and efficiency in direct restorative dentistry.



### 1 Isolate

Effective isolation with **OptraGate®**, cotton rolls and saliva ejector



### 2 Bond

Direct intraoral application of **Adhese® Universal** with the efficient VivaPen®



### Restore

**Tetric® Prime**  
Universal composite

# 3



### 4 Contour

Time-saving contouring with **OptraSculpt®** due to its anti-stick effect



### 5 Cure

Reliable and fast curing with the **Bluephase®** curing units



### 6 Polish

High-gloss polishing in only one step **OptraGloss®**



# Delivery forms

## Tetric® Prime

### Tetric® Prime Syringe Refills

#### Contents: 1 - Tetric Prime Syringe Refill (1 x 3gm)

706607US Tetric Prime Refill 1x3g A1  
706608US Tetric Prime Refill 1x3g A2  
706609US Tetric Prime Refill 1x3g A3  
706610US Tetric Prime Refill 1x3g A3.5  
706611US Tetric Prime Refill 1x3g A4  
706612US Tetric Prime Refill 1x3g B1  
706613US Tetric Prime Refill 1x3g B2  
706615US Tetric Prime Refill 1x3g C2  
706618US Tetric Prime Refill 1x3g A2 Dentin  
706619US Tetric Prime Refill 1x3g A3.5 Dentin  
706621US Tetric Prime Refill 1x3g T  
706622US Tetric Prime Refill 1x3g Bleach L



### Tetric® Prime Cavifil Refills

#### Contents: 20 -Tetric Prime Cavifils (20 x 0.25gm)

706563US Tetric Prime Refill 20x0.25g A1  
706564US Tetric Prime Refill 20x0.25g A2  
706585US Tetric Prime Refill 20x0.25g A3  
706586US Tetric Prime Refill 20x0.25g A3.5  
706587US Tetric Prime Refill 20x0.25g A4  
706588US Tetric Prime Refill 20x0.25g B1  
706589US Tetric Prime Refill 20x0.25g B2  
706591US Tetric Prime Refill 20x0.25g C2  
706594US Tetric Prime Refill 20x0.25g A2 Dentin  
706595US Tetric Prime Ref. 20x0.25g A3.5 Dentin  
706597US Tetric Prime Refill 20x0.25g T  
706598US Tetric Prime Refill 20x0.25g Bleach L



### Tetric® Prime Shade Guide

709578WW Tetric Prime shade guide



[ivoclarvivadent.com](http://ivoclarvivadent.com)  
EXPLORE SHOP LEARN

©2020 Ivoclar Vivadent, Inc. Ivoclar Vivadent, Tetric, Tetric EvoFlow, OptraGate, Adhese, OptraSculpt, Bluephase and OptraGloss are trademarks of Ivoclar Vivadent, Inc.

United States  
175 Pineview Drive  
Amherst, New York  
14228  
800-533-6825  
Fax: 716-691-2285

Canada  
1-6600 Dixie Road  
Mississauga, Ontario  
L5T 2Y2  
800-263-8182  
Fax: 905-670-3102

  
**ivoclar**  
**vivadent**<sup>®</sup>  
passion vision innovation