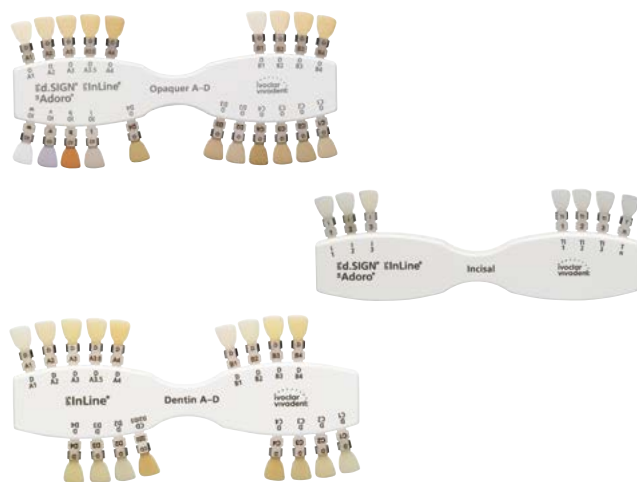


IPS InLine® Material Shade Guides

The shade tabs are fired from original IPS InLine® materials under laboratory-type conditions. In this way, they correspond to the desired result.

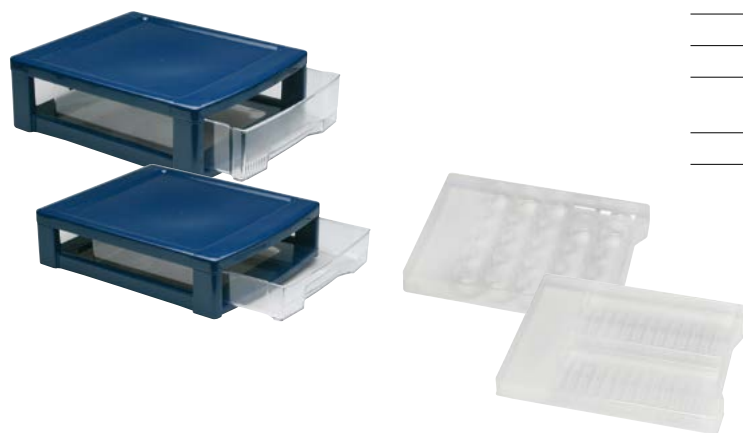


Delivery forms

| IPS InLine® Material Shade Guide | 1 x each | |
|---|-----------|---------------|
| Bleach BL | | 602984 |
| Incisal | | 609611 |
| Impulse | | 593367 |
| Gingiva | | 674209 |
| IPS InLine® PoM Material Shade Guide | 1x | 602408 |

IPS InLine® System Material Box, Insert

The attractive, bare material box is available in 2 sizes and offers space for different materials. The most important advantage of this assortment box is that the individual kits can be conveniently joined together.



Delivery forms

IPS InLine® System Material Box, Insert

| | | |
|---|----|--------|
| IPS InLine System Material Box (80 mm) | 1x | 595319 |
| Wheels | 4x | 594811 |
| IPS InLine Basic Kit Insert (for 25 Refills, jars 20 g) | 1x | 591980 |
| IPS InLine Basic Kit Insert (for 8 Refills, Liquids) | 1x | 591982 |
| IPS InLine Margin Kit Insert (for 18 Refills, 15 jars 20 g, 3 Liquids) | 1x | 591983 |
| IPS InLine Deep Dentin Kit Insert (for 20 Refills, jars 20 g) | 1x | 594448 |